

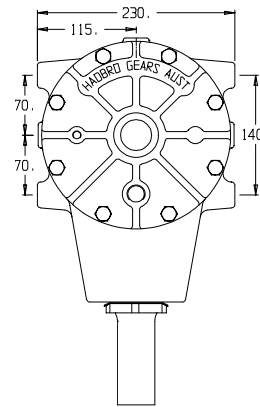
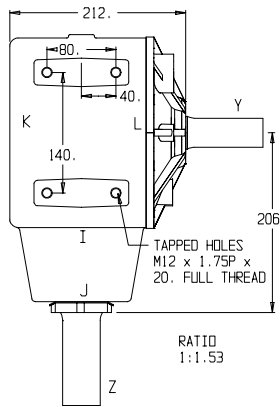
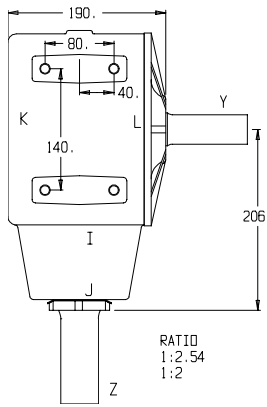


HADBRO TRANSMISSION PRODUCTS

MODEL:

GB-14

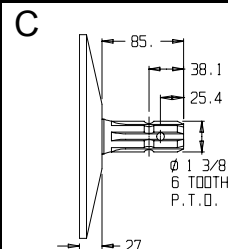
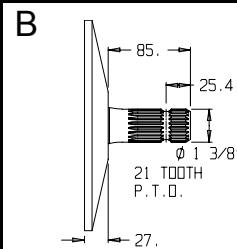
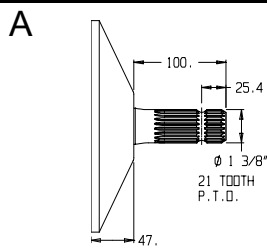
WINDROWING \ BRUSH CUTTERS & MISCELLANEOUS APPLICATIONS



BEARINGS

- I – 28521/28584
- J – 28521/28580
- K – M12610/M12649
- L – 2735x/2788

GEAR SHAFT DETAILS



WEIGHT

34 Kg

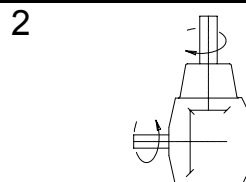
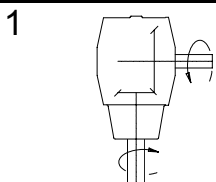
GEAR LUBRICATION
SAE 90 EP

GEARS

CASE HARDENED
SHAFTS
HARDENED & GROUND

	RATIO	INPUT R.P.M.	INPUT SHAFT	INPUT TYPE	POWER		OUTPUT TORQUE		SHAFTS			GEAR ASSEMBLY	CODE No
					H.P.	K.W.	Lb Ins	NM	X	Y	Z		
SPEED INCREASING UNITS	1:1.53	1000	Y	A	140.0	104.0	5769	651	-	A	G	1 & 2	A14G153
			Y	A					-	A	H	1 & 2	A14H153
			Y	A					-	A	I	1 & 2	A14I155
			Y	A					-	A	J	1 & 2	A14J156
			Y	A					-	A	K	1 & 2	A14K153
	1:2	540	Y	C	110.0	82.0	6419	725	-	C	G	1 & 2	C14G200
			Y	C					-	C	H	1 & 2	C14H200
			Y	C					-	C	I	1 & 2	C14I200
			Y	C					-	C	J	1 & 2	C14J200
	1:2	1000	Y	B	130.0	97.0	4096	462	-	B	G	1 & 2	B14G200
			Y	B					-	B	H	1 & 2	B14H200
			Y	B					-	B	I	1 & 2	B14I200
Y			B	-					B	J	1 & 2	B14J200	

GEAR ASSEMBLY & SHAFT ROTATION





HADBRO TRANSMISSION PRODUCTS

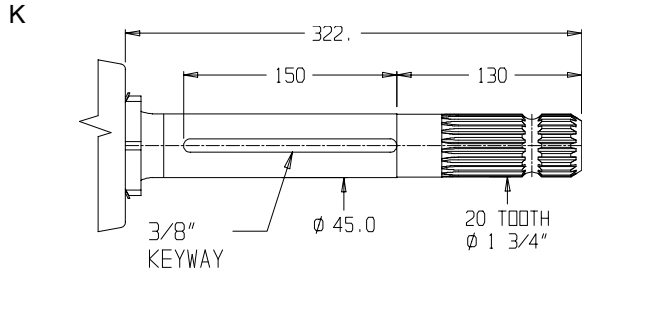
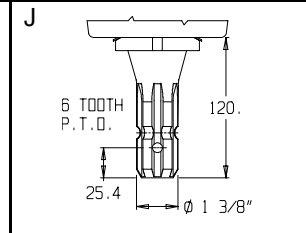
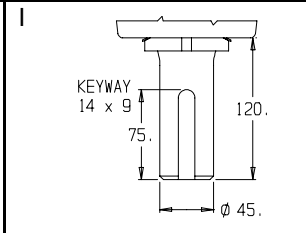
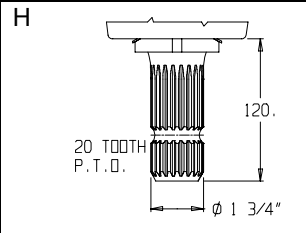
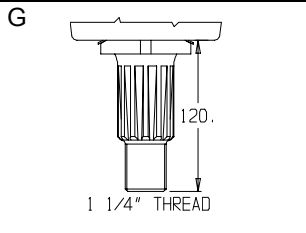
PAGE 2 of 2

MODEL:

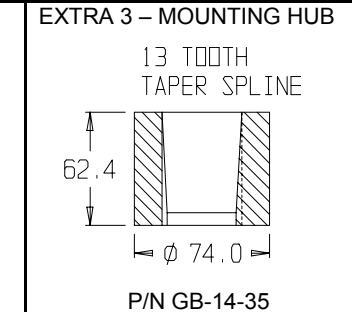
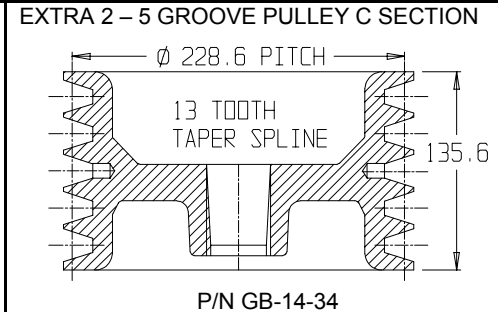
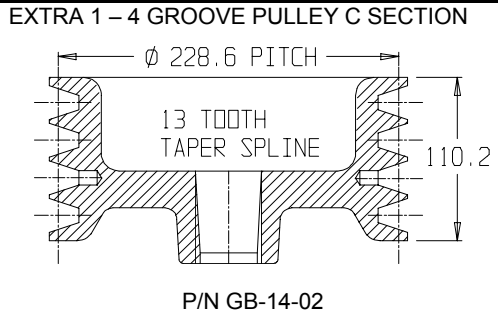
GB-14

WINDROWING \ BRUSH CUTTERS & MISCELLANEOUS APPLICATIONS

PINION SHAFT DETAIL



	RATIO	INPUT R.P.M.	INPUT SHAFT	INPUT TYPE	POWER		OUTPUT TORQUE		SHAFTS			GEAR ASSEMBLY	CODE No
					H.P.	K.W.	Lb Ins	NM	X	Y	Z		
SPEED INCREASING UNITS	1:2.54	540	Y	C	95.0	70.0	4367	493	-	C	G	1 & 2	C14G254
									-	C	H	1 & 2	C14H254
									-	C	I	1 & 2	C14I254
									-	C	J	1 & 2	C14J254



GEAR ASSEMBLY & SHAFT ROTATION

