



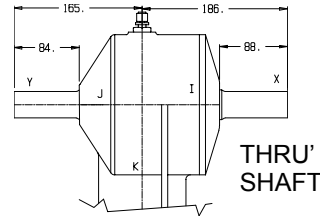
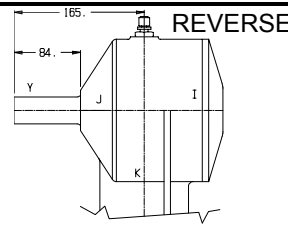
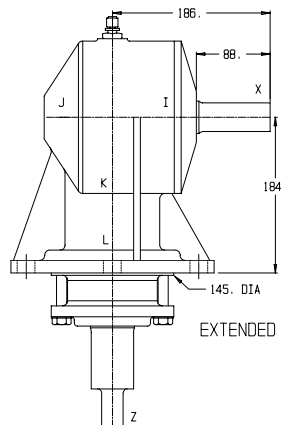
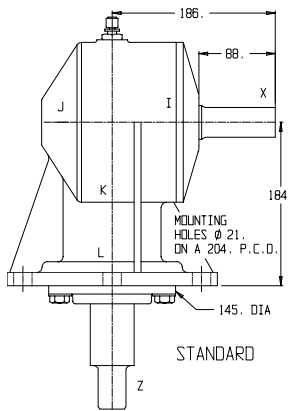
HADBRO TRANSMISSION PRODUCTS

SLASHER GEARBOX

PAGE 1 of 1

MODEL:

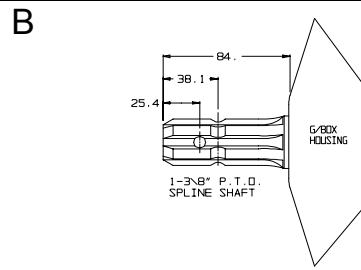
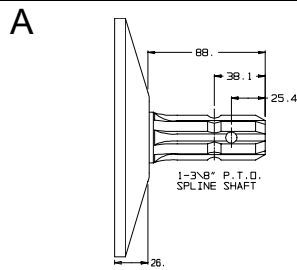
GB-15



BEARINGS

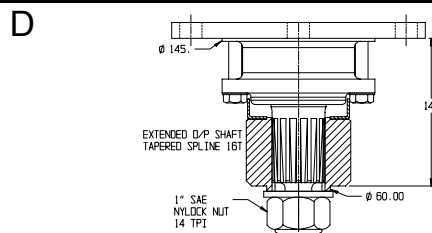
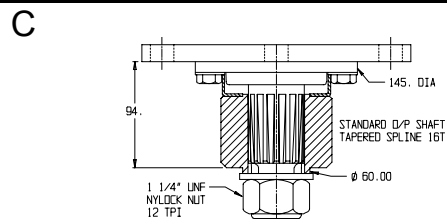
I - 2788/2735X
 J - LM48548/LM48510
 K, L - 28521/28584

GEAR SHAFT DETAILS



WEIGHT
 STD = 28 Kg
 EXT = 34 Kg

GEAR LUBRICATION
 1.25 Lt
 SAE 140 EP



GEARS
 CASE HARDENED
SHAFTS
 HARDENED &
 GROUND

	RATIO	INPUT R.P.M.	INPUT SHAFT	INPUT TYPE	POWER		OUTPUT TORQUE		SHAFTS			GEAR ASSEMBLY	CODE No								
					H.P.	K.W.	Lb Ins	NM	X	Y	Z										
SPEED INCREASING UNITS	1:1.5	540	X	A	75.0	56.0	8753	989	A	-	C	1	A15C150								
			X	A					A	-	D			1	A15D150						
			Y	B					-	B	C					2	B15C150				
			Y	B					-	B	D							2	B15D150		
			X	A					A	B	C									3	A15B150C
			X	A					A	B	D										
	1:1.93	540	X	A	73.0	54.0	8520	962	A	-	C	1	A15C193								
			X	A					A	-	D			1	A15D193						
			Y	B					-	B	C					2	B15C193				
			Y	B					-	B	D							2	B15D193		
			X	A					A	B	C									3	A15B193C
			X	A					A	B	D										

GEAR ASSEMBLY & SHAFT ROTATION

