



# HADBRO TRANSMISSION PRODUCTS

## SLASHER GEARBOX

PAGE 1 of 2

MODEL:

### GB-16

RATIO 1:1

#### BEARINGS

##### STANDARD

I – 33211

J – 32016

K – 32016

L-LM48510/LM48548

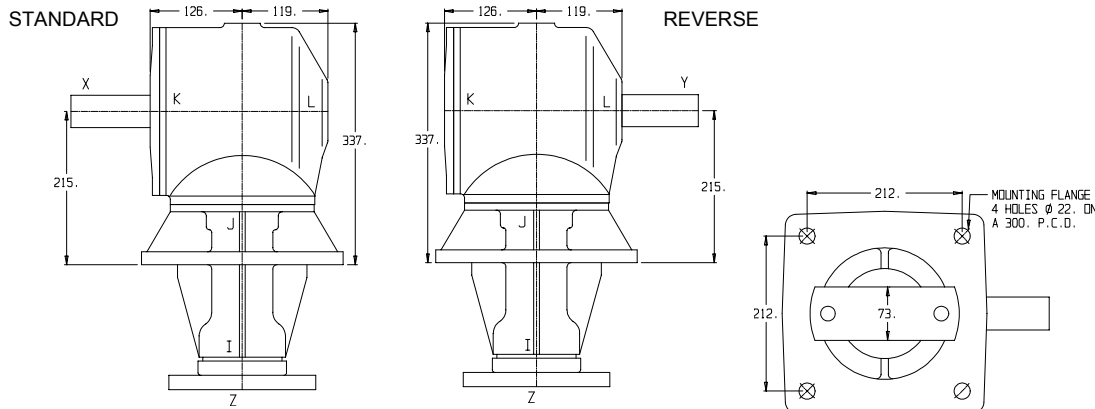
##### REVERSE

I – 33211

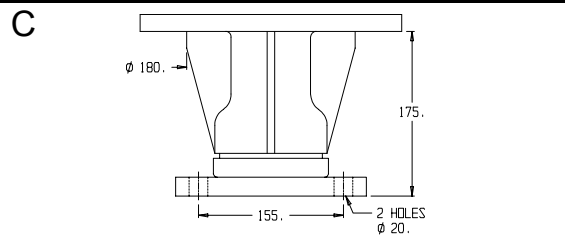
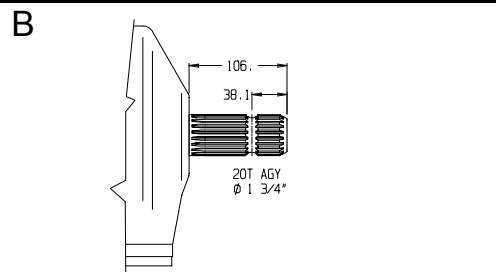
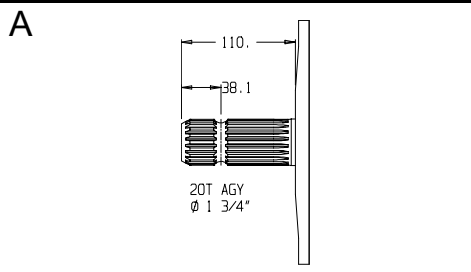
J – 32016

K – 32016

L – 33109



#### GEAR SHAFT DETAILS



**GEARS**  
CASE HARDENED

**SHAFTS**  
HARDENED & GROUND

#### WEIGHT

66 Kg

#### GEAR LUBRICATION

SAE 140 EP  
2 Litres

RATIO	INPUT R.P.M.	INPUT SHAFT	INPUT TYPE	POWER		OUTPUT TORQUE		SHAFTS			GEAR ASSEMBLY	CODE No
				H.P.	K.W.	Lb Ins	NM	X	Y	Z		
1:1	540	X	A	125	93	14589	1648	A	-	C	1	A16C100
		Y	B					-	B	C	2	B16C100
1:1	1000	X	A	155	115	9769	1104	A	-	C	1	A16C100
		Y	B					-	B	C	2	B16C100

#### GEAR ASSEMBLY & SHAFT ROTATION





# HADBRO TRANSMISSION PRODUCTS

## SLASHER GEARBOX

PAGE 2 of 2

MODEL:

**GB-16**

RATIO 1:1.41

**BEARINGS**

**STANDARD**

I – 3720/3767

J-28521/28580

**K – 33209**

L-LM48548/LM48510

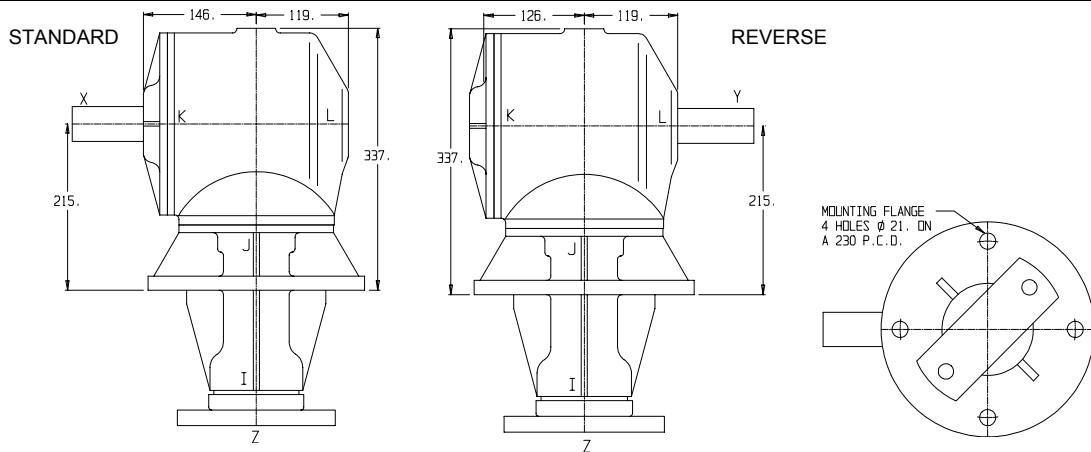
**REVERSE**

I – 3720/3767

J – 28521/28580

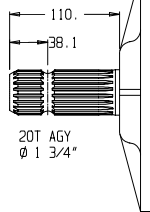
**K – 33209**

**L – 33109**

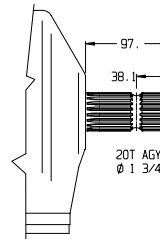


GEAR SHAFT DETAILS

**A**



**B**



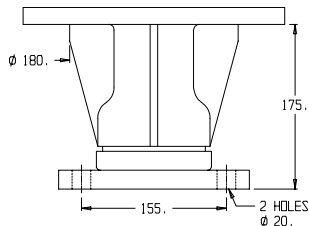
**WEIGHT**

66 Kg

**GEAR LUBRICATION**

SAE 140 EP  
2 Litres

**C**



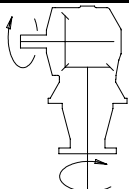
**GEARS**  
CASE HARDENED

**SHAFTS**  
HARDENED &  
GROUND

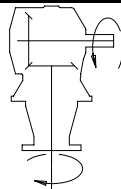
	RATIO	INPUT R.P.M.	INPUT SHAFT	INPUT TYPE	POWER		OUTPUT TORQUE		SHAFTS			GEAR ASSEMBLY	CODE No
					H.P.	K.W.	Lb Ins	NM	X	Y	Z		
SPEED INCREASING UNITS	1:1.41	540	X	A	140	104	11580	1300	A	-	C	1	A16C141
			Y	B					-	B	C	2	B16C141
			X & Y	A & B					A	B	C	3	A16B141C
	1:1.41	1000	X	A	210	156	9380	1060	A	-	C	1	A16C141
			Y	B					-	B	C	2	B16C141
			X & Y	A & B					A	B	C	3	A16B141C

**GEAR ASSEMBLY & SHAFT ROTATION**

**1**



**2**



**3**

