

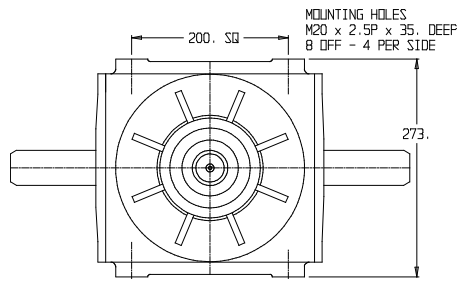
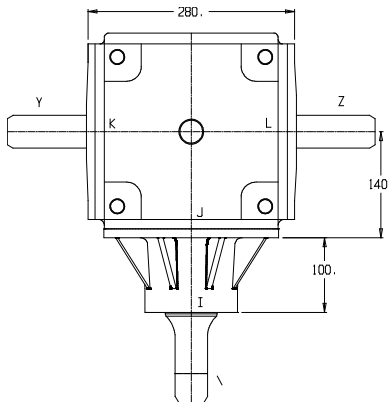


# HADBRO TRANSMISSION PRODUCTS

## MISCELLANEOUS APPLICATIONS

MODEL:

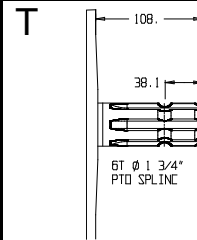
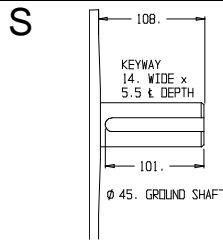
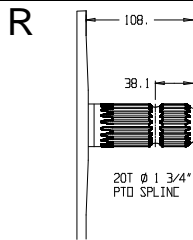
### GB-26



### BEARINGS

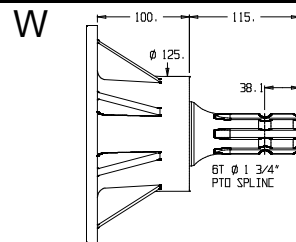
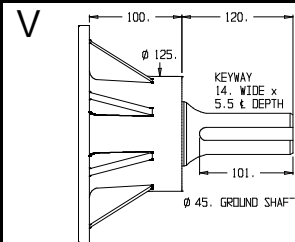
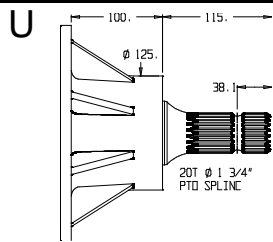
- I - 32016
- J - 33211
- K - 33209
- L - 32016

### SHAFT DETAILS



**WEIGHT**  
78 Kg

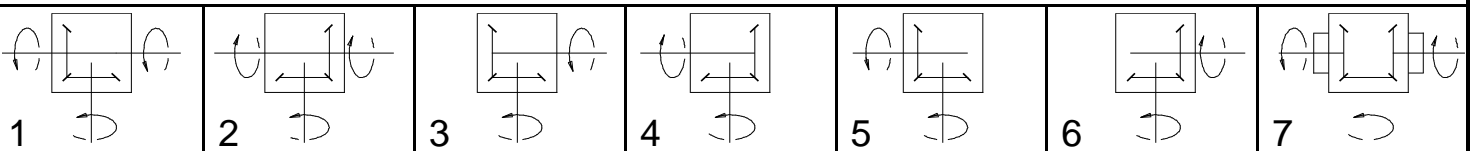
**GEAR LUBRICATION**  
SAE 90 EP  
LITRE



**GEARS**  
CASE HARDENED  
**SHAFTS**  
HARDENED &  
GROUND

RATIO	INPUT R.P.M.	INPUT SHAFT	INPUT TYPE	POWER		OUTPUT TORQUE		SHAFTS			GEAR ASSEMBLY	CODE No
				H.P.	K.W.	Lb Ins	NM	X	Y	Z		
1:1	540	X	U	190	141	22170	2505	U	R	R	1 & 2	A26U100R
			V					S	S	A26V100S		
			W					T	T	A26W100T		
			U					R	-	3 & 4	B26U100R	
			V					S	-		B26V100S	
			W					T	-		B26W100T	
			U					-	R	5 & 6	C26U100R	
			V					-	S		C26V100S	
			W					-	T		C26W100T	
			U					U	U	7	D26U100U	
			V					V	V		D26V100V	
			W					W	W		D26W100W	

### GEAR ASSEMBLY & SHAFT ROTATION





# HADBRO TRANSMISSION PRODUCTS

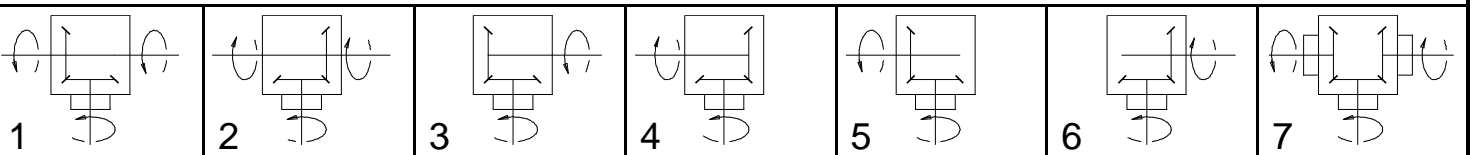
## MISCELLANEOUS APPLICATIONS

MODEL:

### GB-26

	RATIO	INPUT R.P.M.	INPUT SHAFT	INPUT TYPE	POWER		OUTPUT TORQUE		SHAFTS			GEAR ASSEMBLY	CODE No
					H.P.	K.W.	Lb Ins	NM	X	Y	Z		
SPEED INCREASING UNITS	1:1.53	540	X	U	160	119	12210	1380	U	R	R	1 & 2	A26U153R
				V					S	S	A26V153S		
				W					T	T	A26W153T		
				U					3 & 4	B26U153R			
				V						S	-	B26V153S	
				W						T	-	B26W153T	
				U					5 & 6	C26U153R			
				V						-	S	C26V153S	
				W						-	T	C26W153T	
	1:1.88	540	X	U	140	104	8714	984	U	R	R	1 & 2	A26U188R
				V					S	S	A26V188S		
				W					T	T	A26W188T		
				U					3 & 4	B26U188R			
				V						S	-	B26V188S	
				W						T	-	B26W188T	
				U					5 & 6	C26U188R			
				V						-	S	C26V188S	
				W						-	T	C26W188T	
SPEED REDUCTION UNITS	1:0.65	540	X	U	130	97	23210	2622	U	R	R	1 & 2	A26U065R
				V					S	S	A26V065S		
				W					T	T	A26W065T		
				U					3 & 4	B26U065R			
				V						S	-	B26V065S	
				W						T	-	B26W065T	
				U					5 & 6	C26U065R			
				V						-	S	C26V065S	
				W						-	T	C26W065T	
	1:0.53	540	X	U	110	82	24072	2720	U	R	R	1 & 2	A26U053R
				V					S	S	A26V053S		
				W					T	T	A26W053T		
				U					3 & 4	B26U053R			
				V						S	-	B26V053S	
				W						T	-	B26W053T	
				U					5 & 6	C26U053R			
				V						-	S	C26V053S	
				W						-	T	C26W053T	

GEAR ASSEMBLY & SHAFT ROTATION





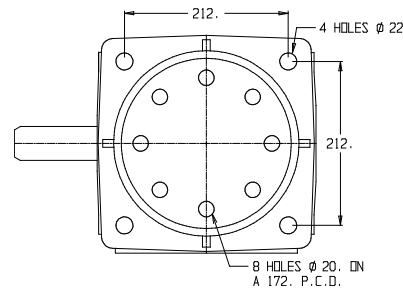
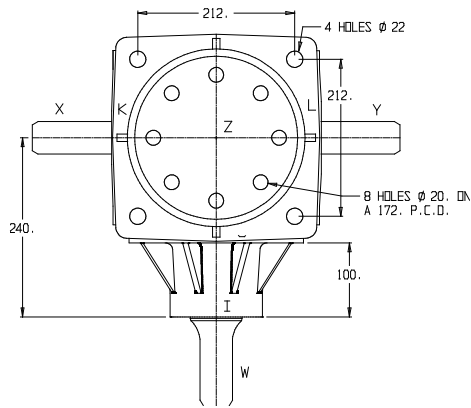
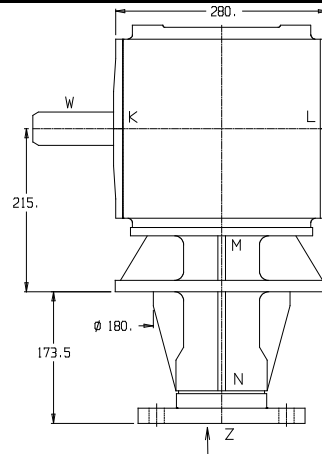
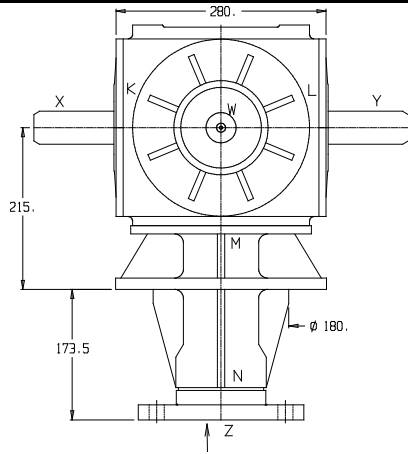
# HADBRO TRANSMISSION PRODUCTS

## SLASHER GEARBOX

PAGE 3 of 4

MODEL:

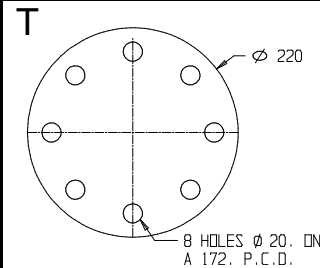
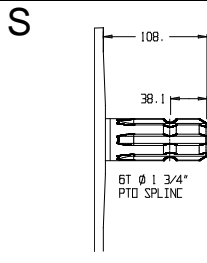
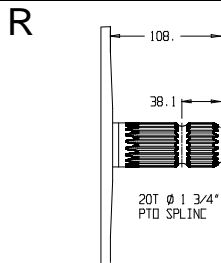
# GB-26



### BEARINGS

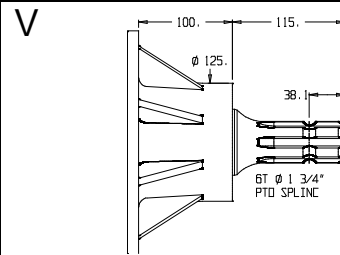
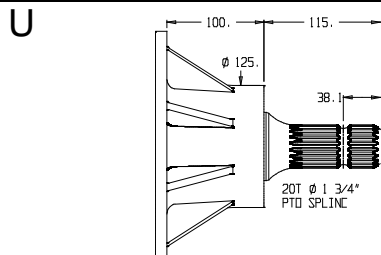
- I – 32016
- J – 33211
- K – 33209
- L – 32016
- M – 32016
- N – 33211

### SHAFT DETAILS



**WEIGHT**  
T/S & CUTTER HEAD = 109 Kg  
CUTTER HEAD ONLY = 100 Kg

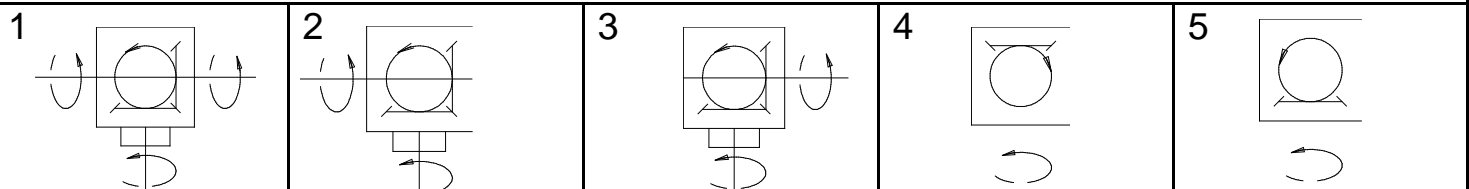
**GEAR LUBRICATION**  
85W/140



**GEARS**  
CASE HARDENED  
**SHAFTS**  
HARDENED & GROUND

RATIO	INPUT R.P.M.	INPUT SHAFT	INPUT TYPE	POWER		OUTPUT TORQUE		SHAFTS				GEAR ASSEMBLY	CODE No
				H.P.	K.W.	Lb Ins	NM	W	X	Y	Z		
1:1	540	W	U	190	141	22175	2505	U	-	-	T	4	B26R100T
			V					-	-	T	B26S100T		
			U					-	-	T	5	C26R100T	
			V					-	-	T		C26S100T	

### GEAR ASSEMBLY & SHAFT ROTATION – LOOKING FROM TOP





# HADBRO TRANSMISSION PRODUCTS

## SLASHER GEARBOX

MODEL:

### GB-26

	RATIO	INPUT R.P.M.	INPUT SHAFT	INPUT TYPE	POWER		OUTPUT TORQUE		SHAFTS				GEAR ASSEMBLY	CODE No				
					H.P.	K.W.	Lb Ins	NM	W	X	Y	Z						
SPEED INCREASING UNITS	1:1.53	540	W	U	160	119	12210	1380	U	R	R	T	1	A26U15RT				
				V					S	S	T	A26V15ST						
				U					160	119	12210	1380	U	R	-	T	2	B26U15RT
				V									S	-	T	B26V15ST		
				U					160	119	12210	1380	U	-	R	T	3	C26U15RT
				V									-	S	T	C26V15ST		
				U					160	119	12210	1380	U	-	-	T	4	B26R153T
				V									-	-	T	B26S153T		
	U	160	119	12210	1380	U	-	-	T	5	C26R153T							
	V					-	-	T	C26S153T									
	1:1.88	540	W	U	140	104	8714	984	U	R	R	T	1	A26U18RT				
				V					S	S	T	A26V18ST						
				U					140	104	8714	984	U	R	-	T	2	B26U18RT
				V									S	-	T	B26V18ST		
				U					140	104	8714	984	U	-	R	T	3	C26U18RT
				V									-	S	T	C26V18ST		
U				140					104	8714	984	U	-	-	T	4	B26R188T	
V												-	-	T	B26S188T			
U	140	104	8714	984	U	-	-	T	5	C26R188T								
V					-	-	T	C26S188T										

GEAR ASSEMBLY & SHAFT ROTATION

