



HADBRO TRANSMISSION PRODUCTS

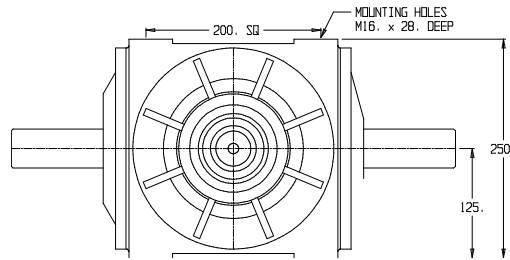
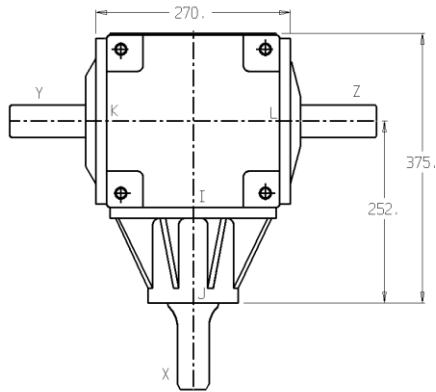
MISCELLANEOUS APPLICATIONS

MODEL:

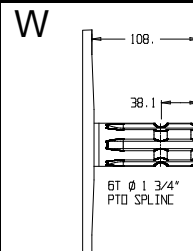
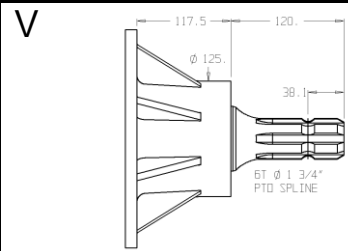
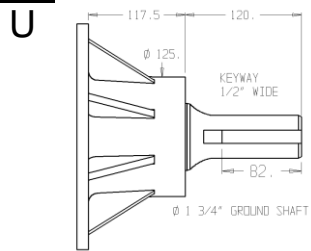
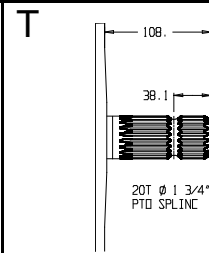
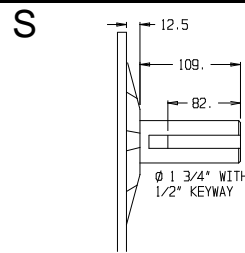
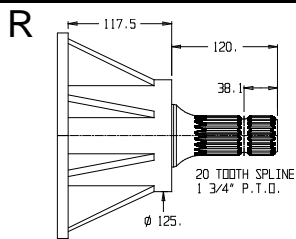
GB-38

BEARINGS

- I – 32016
- J – 33211
- K – 33209
- L – 32016



SHAFT DETAILS



WEIGHT
71 Kg

GEAR LUBRICATION
HD 85W\140

GEARS
CASE HARDENED
SHAFTS
HARDENED &
GROUND

RATIO	INPUT R.P.M.	INPUT SHAFT	INPUT TYPE	POWER		OUTPUT TORQUE		SHAFTS			GEAR ASSEMBLY	CODE No							
				H.P.	K.W.	Lb Ins	NM	X	Y	Z									
1:1	540	X	R	190	140	22100	2500	R	T	T	1 & 2	A38R100T							
			U					S	S	A38U100S									
			V					W	W	A38V100W									
			R					R	-	3 & 4	B38R100T								
			U					S	-		B38U100S								
			V					W	-		B38V100W								
			R					R	-	5 & 6	C38R100T								
			U					-	S		C38U100S								
			V					-	W		C38V100W								
									X	R					R	S	S	1 & 2	A38R100S
									X	R					R	S	-	3 & 4	B38R100S
									X	R					R	-	S	5 & 6	C38R100S

GEAR ASSEMBLY & SHAFT ROTATION

