



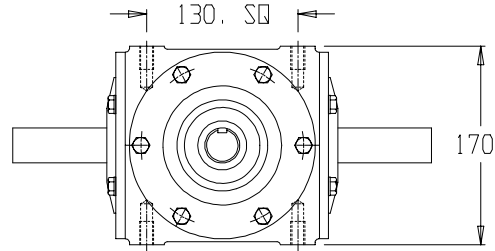
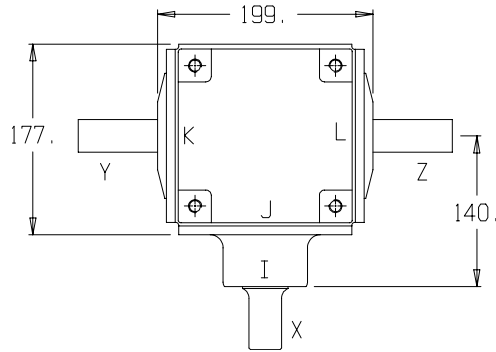
HADBRO TRANSMISSION PRODUCTS

PAGE 1 of 3

MISCELLANEOUS APPLICATIONS

MODEL:

GB-8



4 MOUNTING HOLES PER SIDE
M12 x 1.75 PITCH
20.mm FULL THREAD

BEARINGS

A & B

I – 32007
J – 30207

C & D

K & L – 30207

E

K & L – 30206

WEIGHT

23 Kg

GEAR LUBRICATION

SAE 90 EP
1 LITRE

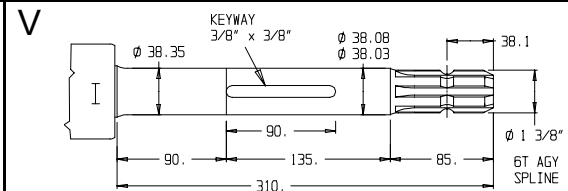
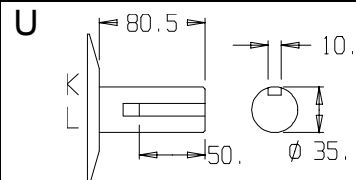
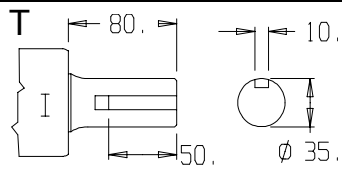
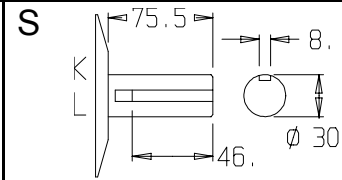
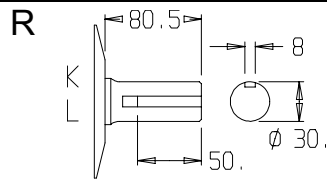
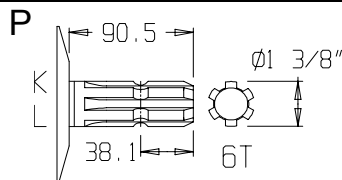
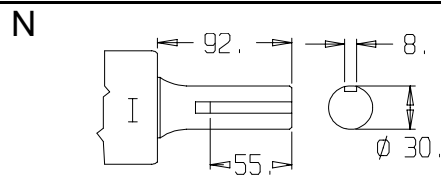
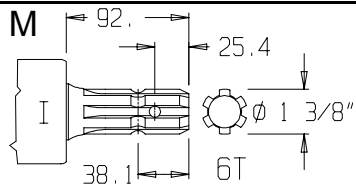
GEARS

CASE HARDENED

SHAFTS

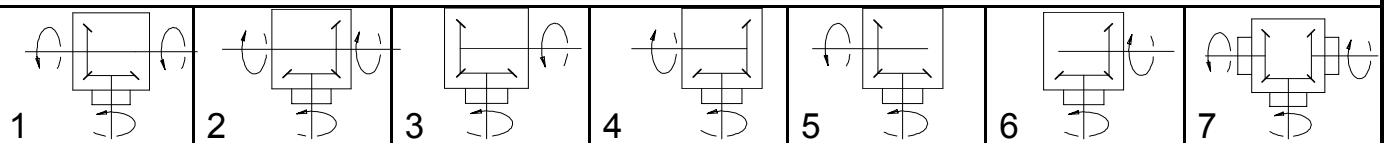
HARDENED &
GROUND

SHAFT DETAILS



RATIO	INPUT R.P.M.	INPUT SHAFT	INPUT TYPE	POWER		OUTPUT TORQUE		SHAFTS			GEAR ASSEMBLY	CODE No
				H.P.	K.W.	Lb Ins	NM	X	Y	Z		
1:1	540	X	M	50.0	37.0	5835	659	M	P	P	1&2	A8M100P
			M					R	R	A8M100R		
			N					R	R	A8N100R		
			N					P	P	A8N100P		
			T					U	U	A8T100U		
			V					P	P	A8V100P		
			N					S	S	A8N100S		
1:1	540	X	M	50.0	37.0	5835	659	M	P	-	3&4	B8M100P
			M					R	-	B8M100R		
			N					R	-	B8N100R		
			N					P	-	B8N100P		
			T					U	-	B8T100U		
			V					P	-	B8V100P		
			N					S	-	B8N100S		

GEAR ASSEMBLY & SHAFT ROTATION





HADBRO TRANSMISSION PRODUCTS

MISCELLANEOUS APPLICATIONS

MODEL:

GB-8

RATIO	INPUT R.P.M.	INPUT SHAFT	INPUT TYPE	POWER		OUTPUT TORQUE		SHAFTS			GEAR ASSEMBLY	CODE No	
				H.P.	K.W.	Lb Ins	NM	X	Y	Z			
1:1	540	X	M	50.0	37.0	5835	659	M	-	P	1&2	C8M100P	
			M					-	R	C8M100R			
			N					-	R	C8N100R			
			N					-	P	C8N100P			
			T					-	U	C8T100U			
			V					-	P	C8V100P			
			N					-	S	C8N100S			
1:1	540	X	M	50.0	37.0	5835	659	M	M	M	7	D8M100M	
			M					N	N	D8M100N			
			N					N	N	D8N100N			
			N					M	M	D8N100M			
			T					T	T	D8T100T			
1:1	1000	X	M,N & T	67.0	50.0	4222	477	As Listed			As Listed	As Listed	
SPEED INCREASING UNITS	1:1.47	540	X	M	52.0	39.0	4127	466	M	P	P	1 & 2	A8M147P
				M					R	R	A8M147R		
				N					R	R	A8N147R		
				N					P	P	A8N147P		
				T					U	U	A8T147U		
	1:1.47	540	X	M	52.0	39.0	4127	466	M	P	-	3 & 4	B8M147P
				M					R	-	B8M147R		
				N					R	-	B8N147R		
				N					P	-	B8N147P		
				T					U	-	B8T147U		
	1:1.47	540	X	M	52.0	39.0	4127	466	M	-	R	5 & 6	C8M147P
				M					-	R	C8M147R		
				N					-	R	C8N147R		
				N					-	P	C8N147P		
				T					-	U	C8T147U		
	1:1.47	540	X	M	52.0	39.0	4127	466	M	M	M	7	D8M147M
				M					N	N	D8M147N		
				N					N	N	D8N147N		
				N					M	M	D8N147M		
				T					T	T	D8T147T		
1:1.47	1000	X	M,N & T	58.0	43.0	2485	280	As Listed			As Listed	As Listed	
1:1.85	540	X	M	67.0	50.0	7900	893	M	P	P	1 & 2	A8M185P	

GEAR ASSEMBLY & SHAFT ROTATION

