

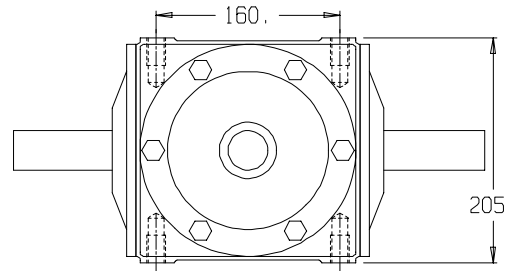
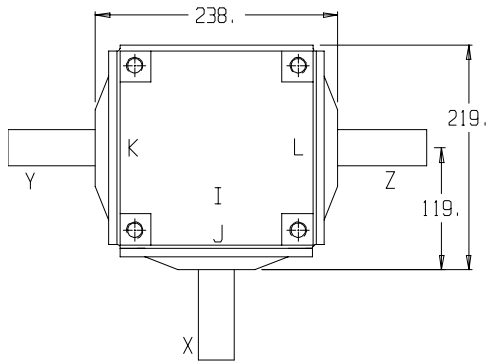


HADBRO TRANSMISSION PRODUCTS

MISCELLANEOUS APPLICATIONS

MODEL:

GB-9



4 MOUNTING HOLES PER SIDE
M16 x 2.0 PITCH
25.mm FULL THREAD

BEARINGS

A & B

- I - LM48510
- LM48548
- JKL - HM88610
- HM88649

C & D

- I - LM48510
- LM48548
- JKL - HM88610
- HM88648

WEIGHT

38 Kg

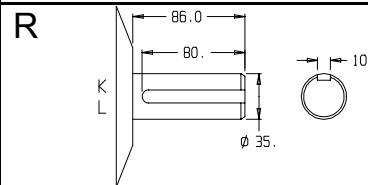
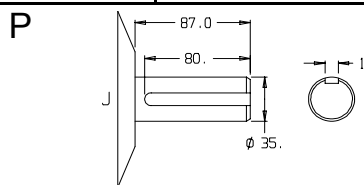
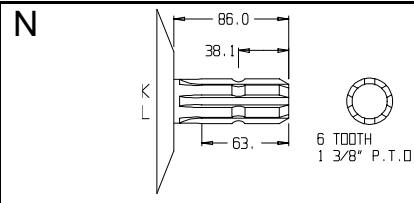
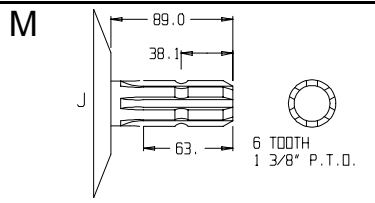
GEAR LUBRICATION

SAE 90 EP
1.25 LITRE

GEARS

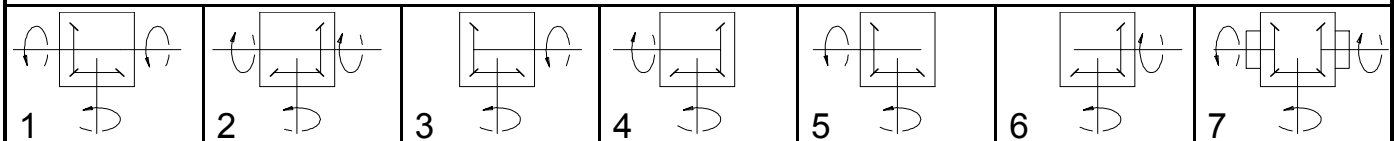
CASE HARDENED
SHAFTS
HARDENED &
GROUND

SHAFT DETAILS



RATIO	INPUT R.P.M.	INPUT SHAFT	INPUT TYPE	POWER		OUTPUT TORQUE		SHAFTS			GEAR ASSEMBLY	CODE No
				H.P.	K.W.	Lb Ins	NM	X	Y	Z		
1:1	540	X	M	98.0	73.0	11438	1292	M	N	N	1 & 2	A9M100N
			M					R	R	A9M100R		
			P					N	N	A9P100N		
			P					R	R	A9P100R		
1:1	540	X	M	98.0	73.0	11438	1292	M	-	N	3 & 4	B9M100N
			M					-	R	B9M100R		
			P					-	N	B9P100N		
			P					-	R	B9P100R		
1:1	540	X	M	98.0	73.0	11438	1292	M	N	-	5 & 6	C9M100N
			M					R	-	C9M100R		
			P					N	-	C9P100N		
			P					R	-	C9P100R		
1:1	540	X	M	98.0	73.0	11438	1292	S	S	S	7	D9S100S
			S					U	U	D9S100U		
			U					U	U	D9U100U		
			U					S	S	D9U100S		
1:1	1000	X	M & P	135.0	100.0	8508	961	As Listed		1 to 7	As Listed	

GEAR ASSEMBLY & SHAFT ROTATION





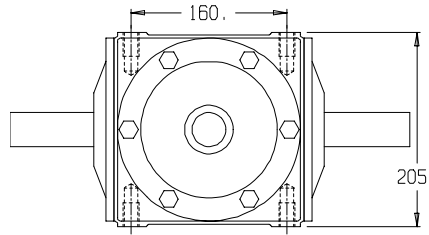
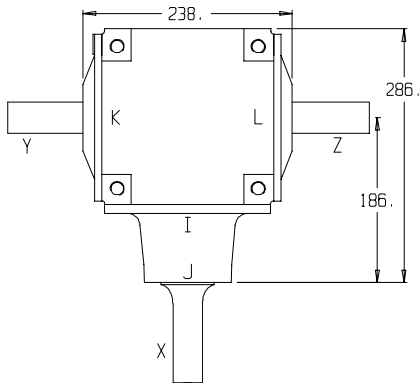
HADBRO TRANSMISSION PRODUCTS

MISCELLANEOUS APPLICATIONS

PAGE 2 of 3

MODEL:

GB-9



4 MOUNTING HOLES PER SIDE
M16 x 2.0 PITCH
25.mm FULL THREAD

BEARINGS

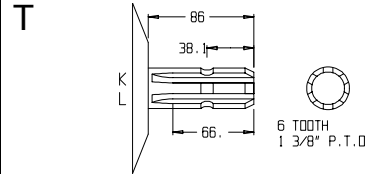
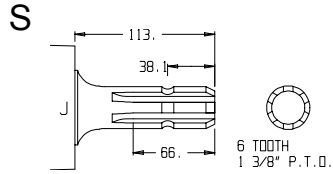
A & B

I - 25580/25520
J - LM603049/LM603011
K L - HM88649/HM88610

C & D

I - 25580/25520
J - LM603049/LM603011
K L - HM88648/HM88610

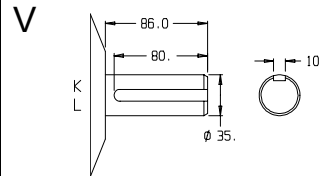
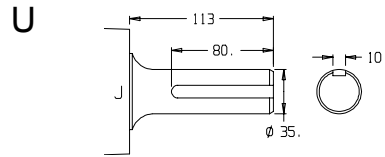
SHAFT DETAILS



WEIGHT
40 Kg

GEAR LUBRICATION

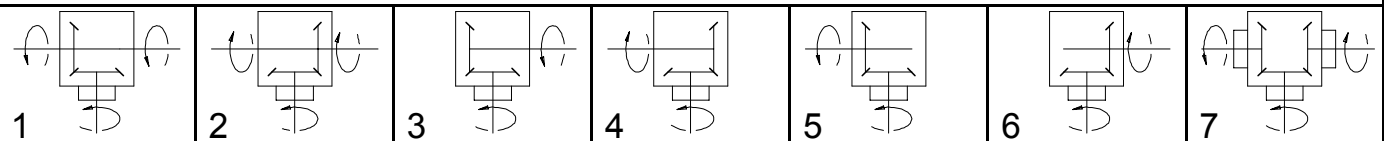
SAE 90 EP
1.5 LITRE



GEARS
CASE HARDENED
SHAFTS
HARDENED &
GROUND

	RATIO	INPUT R.P.M.	INPUT SHAFT	INPUT TYPE	POWER		OUTPUT TORQUE		SHAFTS			GEAR ASSEMBLY	CODE No
					H.P.	K.W.	Lb Ins	NM	X	Y	Z		
SPEED INCREASING UNITS	1:1.3	540	X	S	92.0	68.0	8297	937	S	T	T	1 & 2	A9S130T
				U					S	V	V		A9S130V
				U					U	T	T		A9U130T
				U					U	V	V		A9U130V
	1:1.3	540	X	S	92.0	68.0	8297	937	S	-	T	3 & 4	B9S130T
				U					S	-	V		B9S130V
				U					U	-	T		B9U130T
				U					U	-	V		B9U130V
	1:1.3	540	X	S	92.0	68.0	8297	937	S	T	-	5 & 6	C9S130T
				U					S	V	-		C9S130V
				U					U	T	-		C9U130T
				U					U	V	-		C9U130V
1:1.3	540	X	S & U	92.0	68.0	8297	937	S	S	S	7	D9S130S	
1:1.3	1000	X	S & U	115.0	85.0	5600	632	As Listed			1 to 7	As Listed	
1:1.5	540	X	S	89.0	66.0	10387	1173	S	T	T	1 & 2	A9S150T	
			U					S	V	V		A9S150V	
			U					U	T	T		A9U150T	
			U					U	V	V		A9U150V	

GEAR ASSEMBLY & SHAFT ROTATION





HADBRO TRANSMISSION PRODUCTS

MISCELLANEOUS APPLICATIONS

MODEL:

GB-9

	RATIO	INPUT R.P.M.	INPUT SHAFT	INPUT TYPE	POWER		OUTPUT TORQUE		SHAFTS			GEAR ASSEMBLY	CODE No	
					H.P.	K.W.	Lb Ins	NM	X	Y	Z			
SPEED INCREASING UNITS	1:1.5	540	X	S	89.0	66.0	10387	1173	S	-	T	3 & 4	B9S150T	
				S					-	V	B9S150V			
				U					-	T	B9U150T			
				U					-	V	B9U150V			
	1:1.5	540	X	S	89.0	66.0	10387	1173	S	T	-	5 & 6	C9S150T	
				S					V	-	C9S150V			
				U					T	-	C9U150T			
				U					V	-	C9U150V			
	1:1.5	540	X	S	89.0	66.0	10387	1173	S	S	S	7	D9S150S	
				U					U	U	D9U150U			
	1:1.5	1000	X	S & U	110.0	82.0	4621	522	As Listed			1 to 7	As Listed	
	SPEED REDUCTION UNITS	1:0.77	540	X	S	81.0	60.0	12234	1382	S	T	T	1 & 2	A9S077T
S										V	V	A9S077V		
U										T	T	A9U077T		
U										V	V	A9U077V		
1:0.77		540	X	S	81.0	60.0	12234	1382	S	-	T	3 & 4	B9S077T	
									S	-	V		B9S077V	
									U	-	T		B9U077T	
									U	-	V		B9U077V	
1:0.77		540	X	S	81.0	60.0	12234	1382	S	T	-	5 & 6	C9S077T	
									S	V	-		C9S077V	
									U	T	-		C9U077T	
									U	V	-		C9U077V	
1:0.77		540	X	S	81.0	60.0	12234	1382	S	S	S	7	D9S077S	
									U	U	U		D9U077U	
1:0.77		1000	X	S	106.0	79.0	8645	976	As Listed			1 to 7	As Listed	
SPEED REDUCTION UNITS		1:0.67	540	X	S	73.0	54.0	12780	1444	S	T	T	1 & 2	A9S067T
					S					V	V	A9S067V		
					U					T	T	A9U067T		
	U				V					V	A9U067V			
	1:0.67	540	X	S	73.0	54.0	12780	1444	S	-	T	3 & 4	B9S067T	
				S					-	V	B9S067V			
				U					-	T	B9U067T			
				U					-	V	B9U067V			
	1:0.67	540	X	S	73.0	54.0	12780	1444	S	T	-	5 & 6	C9S067T	
				S					V	-	C9S067V			
				U					T	-	C9U067T			
				U					V	-	C9U067V			
	1:0.67	540	X	S	73.0	54.0	12780	1444	S	S	S	7	D9S067S	
				U					U	U	D9U067U			
	1:0.67	1000	X	S & U	96.0	71.0	9075	1025	As Listed			1 to 7	As Listed	

GEAR ASSEMBLY & SHAFT ROTATION

