



# HARDMAN BROS PTY LTD

385-393 LOWER DANDENONG RD. DINGLEY,  
VIC 3172 AUSTRALIA  
TELEPHONE: (03) 9551 5566 FACSIMILE: (03) 9551 8060  
EMAIL: info@hardmanbros.com.au

A.B.N. 50 004 436 711

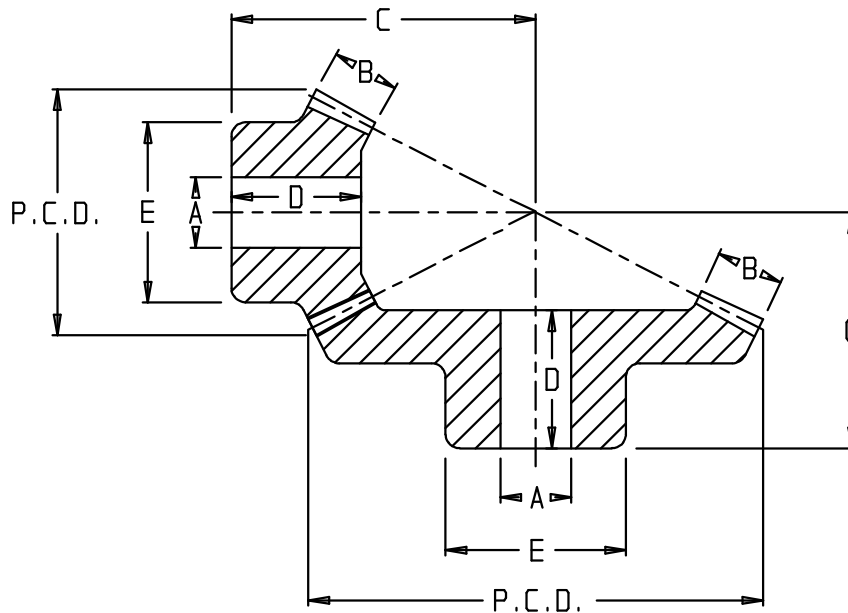


## DIAMETRAL PITCH RATIO BEVEL GEARS

FEB, 2008

MATERIAL STEEL K1040 - K1045 SUITABLE FOR FLAME OR INDUCTION HARDENING

PART NO	TEETH	MAT'L	PCD	A	B	C	D	E	\$ SET	\$ EACH	Kg SET
R123618	36	STEEL	3.00"	5/8"	1/2"	1.500"	1.000"	17/16"			0.55
12DP	18	STEEL	1.50"	1/2"	1/2"	2.250"	1.220"	1 1/4"			
R124824	48	STEEL	4.00"	5/8"	5/8"	2.000"	1.313"	2 1/2"			1.55
12DP	24	STEEL	2.00"	1/2"	5/8"	2.875"	1.500"	1 1/2"			
R125418	54	STEEL	4.50"	5/8"	5/8"	1.750"	1.250"	3"			1.70
12DP	18	STEEL	1.50"	1/2"	5/8"	3.000"	1.375"	1 1/4"			
R127218	72	STEEL	6.00"	3/4"	5/8"	2.000"	1.437"	2"			2.60
12DP	18	STEEL	1.50"	1/2"	5/8"	3.750"	1.375"	1 1/4"			
R103020	30	STEEL	3.00"	3/4"	5/8"	2.250"	1.625"	2"			1.10
10DP	20	STEEL	2.00"	3/4"	5/8"	2.500"	1.563"	1 3/4"			
R104020	40	STEEL	4.00"	3/4"	3/4"	2.500"	1.875"	3"			2.25
10DP	20	STEEL	2.00"	3/4"	3/4"	3.125"	1.844"	1 3/4"			
R106020	60	STEEL	6.00"	7/8"	13/16"	2.750"	1.875"	3"			3.50
10DP	20	STEEL	2.00"	3/4"	13/16"	4.375"	2.187"	1 3/4"			
R106015	60	STEEL	6.00"	7/8"	3/4"	2.250"	1.500"	2 1/4"			2.80
10DP	15	STEEL	1.50"	5/8"	3/4"	3.875"	1.625"	1 7/16"			





# HARDMAN BROS PTY LTD

385-393 LOWER DANDENONG RD. DINGLEY,  
VIC 3172 AUSTRALIA  
TELEPHONE: (03) 9551 5566 FACSIMILE: (03) 9551 8060  
EMAIL: info@hardmanbros.com.au

A.B.N. 50 004 436 711



## DIAMETRAL PITCH RATIO BEVEL GEARS

MATERIAL CAST IRON AS1830

FEB, 2008

MATERIAL STEEL K1040 - K1045 SUITABLE FOR FLAME OR INDUCTION HARDENING

PART NO	TEETH	MAT'L	PCD	A	B	C	D	E	\$ SET	\$ EACH	Kg SET
R84020	40	STEEL	5.00"	1"	7/8"	2.875"	1.874"	3"			3.60
8DP	20	STEEL	2.50"	7/8"	7/8"	4.000"	2.343"	2 1/8"			
R84816	48	STEEL	6.00"	7/8"	7/8"	2.375"	1.500"	2 3/4"			3.20
8DP	16	STEEL	2.00"	3/4"	7/8"	4.250"	2.126"	1 3/4"			
R63618	36	STEEL	6.00"	1 1/8"	1 1/8"	3.500"	2.343"	3 1/4"			5.60
6DP	18	STEEL	3.00"	1"	1 1/8"	4.750"	2.813"	2 1/2"			
R66015	60	IRON	10.00"	1 1/8"	1 1/4"	3.250"	2.126"	3 1/4"			9.50
6DP	15	STEEL	2.50"	1"	1 1/4"	6.750"	3.000"	2 1/8"			
R53015	30	IRON	6.00"	1 1/8"	1 3/8"	3.500"	2.437"	3 1/4"			5.25
5DP	15	STEEL	3.00"	1"	1 3/8"	4.375"	2.689"	2 5/8"			
R54515	45	IRON	9.00"	1 1/4"	1 3/8"	3.750"	2.500"	3 3/4"			10.00
5DP	15	STEEL	3.00"	1"	1 3/8"	5.875"	2.750"	2 5/8"			
R56015	60	IRON	12.00"	1 1/4"	1 3/4"	3.750"	2.626"	4"			17.60
5DP	15	STEEL	3.00"	1"	1 3/4"	7.500"	3.250"	3"			
R44214	42	IRON	10.500"	1 1/8"	1 1/2"	4.000"	2.687"	4 5/16"			13.40
4DP	14	STEEL	3.500"	1 1/8"	1 1/2"	7.250"	3.500"	3 1/4"			
R45614	56	IRON	14.000"	1 1/4"	1 3/4"	4.250"	2.874"	4 3/16"			23.50
4DP	14	STEEL	3.500"	1 1/8"	1 3/4"	9.000"	3.750"	3 1/4"			

