



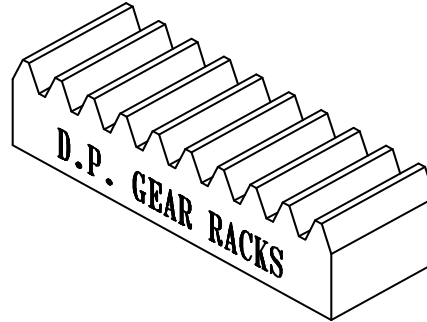
HARDMAN BROS PTY LTD

385-393 LOWER DANDENONG RD. DINGLEY,
VIC 3172 AUSTRALIA
TELEPHONE: (03) 9551 5566 FACSIMILE: (03) 9551 8060
EMAIL: info@hardmanbros.com.au

A.B.N. 50 004 436 711



Quality Endorsed Company
ISO 9001 Lic 4517



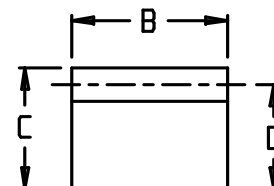
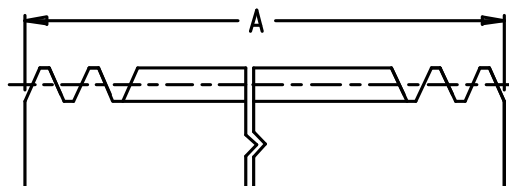
DIAMETRAL PITCH GEAR RACKS

FEB, 2008

MATERIAL STEEL K1040 - K1045

* MILD STEEL

PART NO	DP	A	B	C	D	\$/FOOT	\$/METRE	Kg/METRE
DPR24 -36	*24	36"	3/8"	3/8"	0.333"			0.58
DPR24-10-20-36	*24	36"	10mm	20mm	0.745"			1.36
DPR16 -1M	*16	1000mm	1/2"	1/2"	0.437"			1.10
DPR16-.75 -1M	16	1000mm	3/4"	3/4"	0.687"			2.61
DPR12 -36	12	36"	1"	3/4"	0.666"			3.08
DPR12 -72	12	72"	1"	3/4"	0.666"			6.16
DPR10-1 -36	10	36"	1"	1"	0.900"			4.17
DPR10-1 -72	10	72"	1"	1"	0.900"			8.33
DPR10-1.125 -36	10	36"	1 1/8"	1 1/8"	1.025"			5.34
DPR10-1.125 -72	10	72"	1 1/8"	1 1/8"	1.025"			10.68
DPR10-1.25 -36	10	36"	1 1/4"	1"	0.900"			5.21
DPR10-1.25 -72	10	72"	1 1/4"	1"	0.900"			10.42
DPR8 -36	8	36"	1 1/4"	1"	0.875"			5.06
DPR8 -72	8	72"	1 1/4"	1"	0.875"			10.13
DPR6-1.5 -36	6	36"	1 1/2"	1 1/4"	1.084"			7.53
DPR6-1.5 -72	6	72"	1 1/2"	1 1/4"	1.084"			15.06
DPR6-2 -36	6	36"	2"	1 1/2"	1.333"			12.34
DPR6-2 -72	6	72"	2"	1 1/2"	1.333"			24.70
DPR5 -36	5	36"	2"	1 1/2"	1.300"			12.05
DPR5 -72	5	72"	2"	1 1/2"	1.300"			24.08
DPR4 -36	4	36"	3"	1 1/2"	1.250"			17.36
DPR4 -72	4	72"	3"	1 1/2"	1.250"			34.73

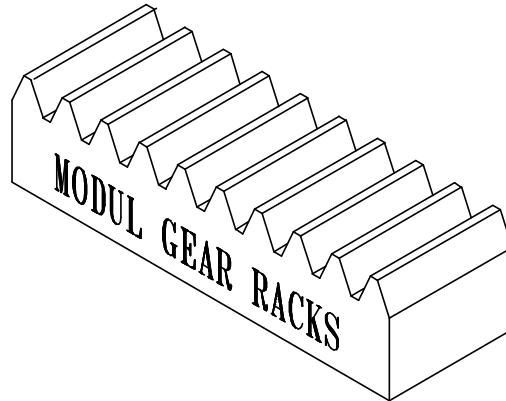




HARDMAN BROS PTY LTD

385-393 LOWER DANDENONG RD. DINGLEY,
VIC 3172 AUSTRALIA
TELEPHONE: (03) 9551 5566 FACSIMILE: (03) 9551 8060
EMAIL: info@hardmanbros.com.au

A.B.N. 50 004 436 711



MODUL GEAR RACKS

FEB, 2008

MATERIAL STEEL K1040 - K1045

PART NO	MODUL	A	B	C	D	\$/METRE	Kg/METRE
MR1-20H -500	1	500	10	20	19		0.75
MR1-20H -1000	1	1000	10	20	19		1.50
MR1-15H -1000	1	1000	15	15	14		1.65
MR1.5 - 500	1.5	500	15	15	13.5		0.80
MR1.5 - 1000	1.5	1000	15	15	13.5		1.60
MR2 - 500	2	500	20	20	18		1.40
MR2 - 1000	2	1000	20	20	18		2.80
MR2.5-25H - 500	2.5	500	25	25	22.5		2.20
MR2.5-25H - 1000	2.5	1000	25	25	22.5		4.42
MR2.5-30H - 1000	2.5	1000	25	30	27.5		5.40
MR3-25H - 1000	3	1000	30	25	22		5.20
MR3-30H - 1000	3	1000	30	30	27		6.35
MR3	3	1000	32	25	22		5.53
MR4-30H - 1000	4	1000	40	30	26		8.16
MR4-40H - 1000	4	1000	40	40	36		11.30
MR5-40H - 1000	5	1000	50	40	35		13.75

