



HADBRO TRANSMISSION PRODUCTS

PAGE 1 of 2

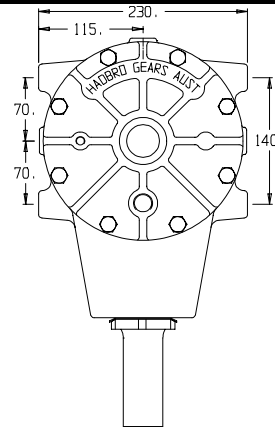
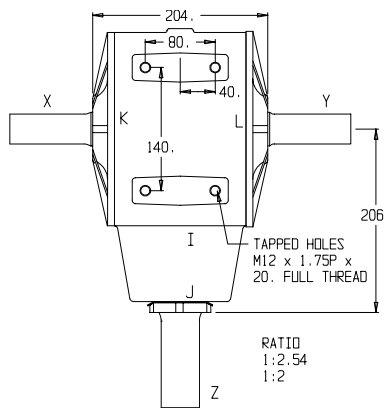
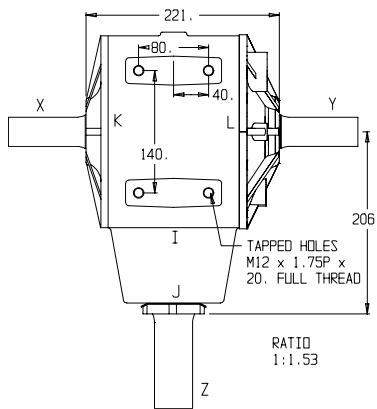
MODEL:

GB-13

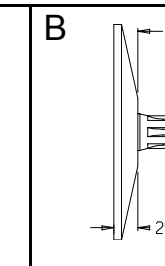
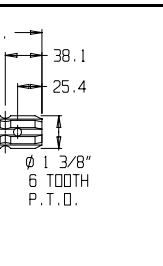
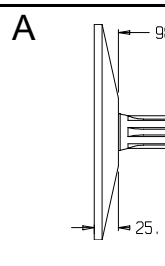
TOPPING \ WINDROWING &
MISCELLANEOUS APPLICATIONS

BEARINGS

- I – 28521/28584
- J – 28521/28580
- K,L – 2735x/2788



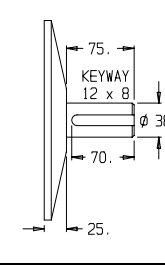
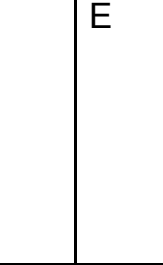
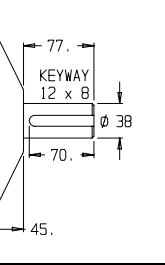
GEAR
SHAFT
DETAILS



WEIGHT
35 Kg

GEAR LUBRICATION
SAE 90 EP

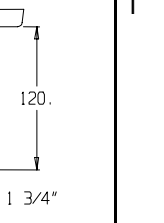
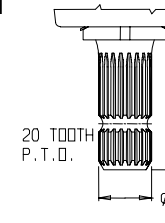
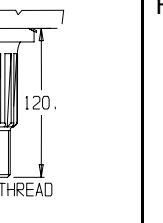
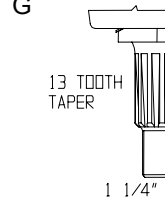
D



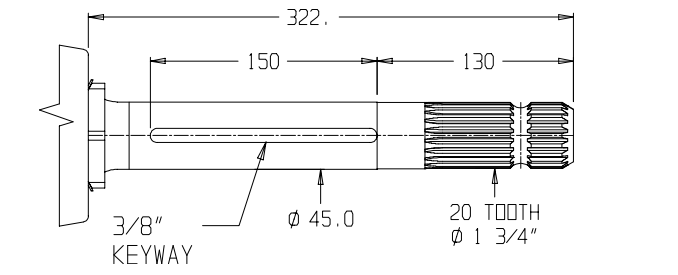
GEARS
CASE HARDENED

SHAFTS
HARDENED &
GROUND

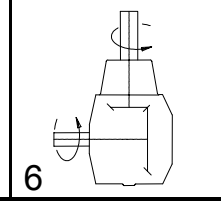
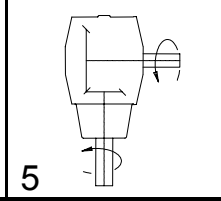
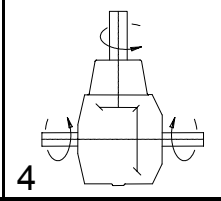
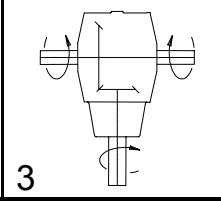
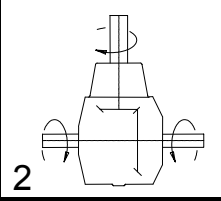
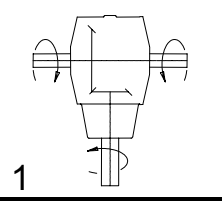
PINION
SHAFT
DETAIL



K



GEAR ASSEMBLY & SHAFT ROTATION





HADBRO TRANSMISSION PRODUCTS

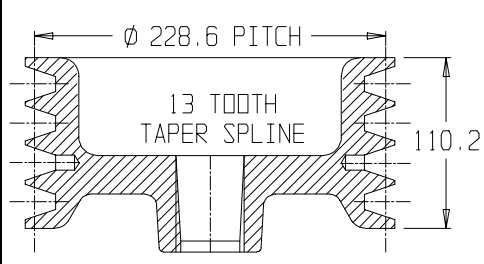
MODEL:

GB-13

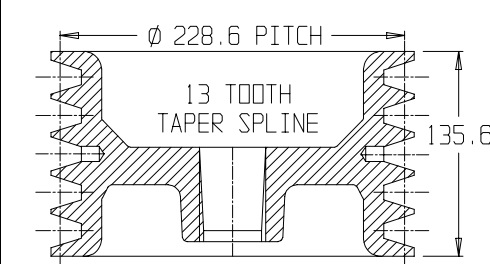
TOPPING \ WINDROWING &
MISCELLANEOUS APPLICATIONS

	RATIO	INPUT R.P.M.	INPUT SHAFT	INPUT TYPE	POWER		OUTPUT TORQUE		SHAFTS			GEAR ASSEMBLY	CODE No
					H.P.	K.W.	Lb Ins	NM	X	Y	Z		
SPEED INCREASING UNITS	1:1.53	540	X	B	120.0	89.0	9157	1034	B	C	G	1 to 4	B13C153G
									B	C	H	1 to 4	B13C153H
									B	C	I	1 to 4	B13C153I
									B	C	J	1 to 4	B13C153J
									B	C	K	1 to 4	B13C153K
	1:1.53	540	X	E	120.0	89.0	9157	1034	E	D	G	1 to 4	E13D153G
									E	D	H	1 to 4	E13D153H
									E	D	I	1 to 4	E13D153I
									E	D	J	1 to 4	E13D153J
									E	D	K	1 to 4	E13D153K
	1:1.53	540	X	F	120.0	89.0	9157	1034	F	-	G	5 & 6	F13G153
									F	-	H	5 & 6	F13H153
									F	-	I	5 & 6	F13I153
									F	-	J	5 & 6	F13J153
									F	-	K	5 & 6	F13K153
	1:1.53	1000	X	A	140.0	104.0	5769	651	As Listed			1 to 6	As Listed
	1:2.54	540	X	A	95.0	70.0	4367	493	A	A	G	1 to 4	A13A254G
									A	A	H	1 to 4	A13A254H
									A	A	I	1 to 4	A13A254I
									A	A	J	1 to 4	A13A254J
1:2	540	X	A	110.0	82.0	6419	725	A	A	G	1 to 4	A13A200G	
1:2	1000	X	A	130.0	97.0	4096	462	A	A	G	1 to 4	A13A200G	

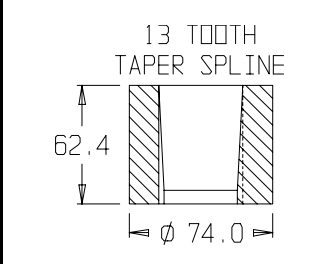
EXTRA 1 - 4 GROOVE PULLEY C SECTION



EXTRA 2 - 5 GROOVE PULLEY C SECTION



EXTRA 3 - MOUNTING HUB



GEAR ASSEMBLY & SHAFT ROTATION

