



HADBRO TRANSMISSION PRODUCTS

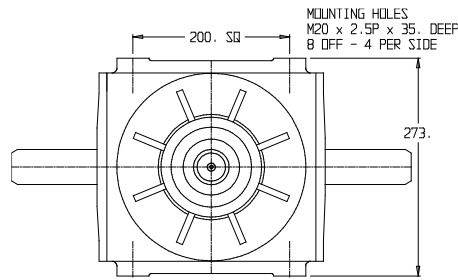
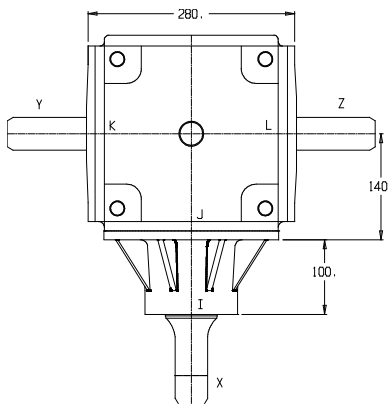
MISCELLANEOUS APPLICATIONS

MODEL:

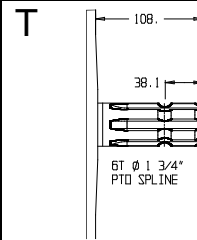
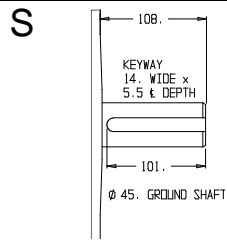
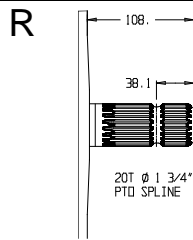
GB-26

BEARINGS

- I - 32016
- J - 33211
- K - 33209
- L - 32016



SHAFT DETAILS

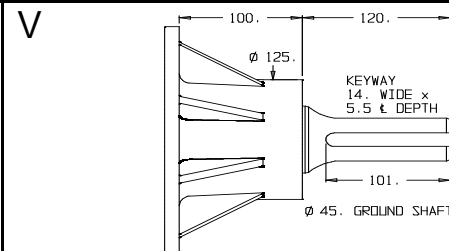
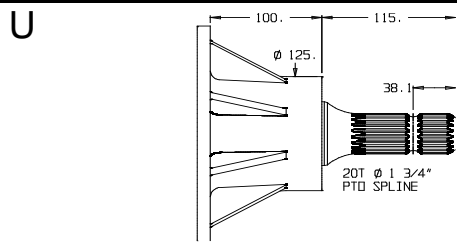


WEIGHT

78 Kg

GEAR LUBRICATION

Mobilube HD Plus
85W-140



GEARS

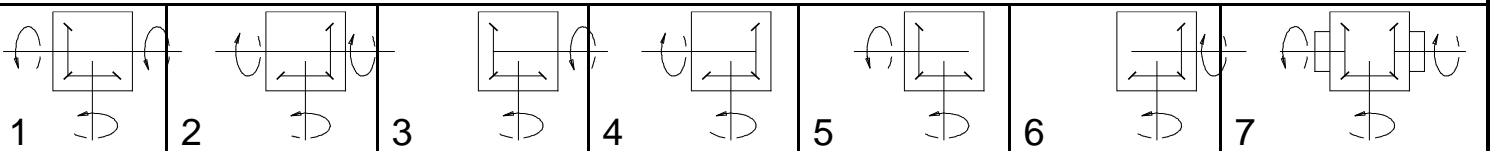
CASE HARDENED

SHAFTS

HARDENED & GROUND

RATIO	INPUT R.P.M.	INPUT SHAFT	INPUT TYPE	POWER		OUTPUT TORQUE		SHAFTS			GEAR ASSY	CODE No	PRICE EX GST
				H.P.	K.W.	Lb Ins	NM	X	Y	Z			
1:1	540	X	U	190	141	22170	2505	U	R	R	1 & 2	A26U100R	\$2940.00
			V					S	S	A26V100S		\$2940.00	
			U					T	T	A26U100T		\$2940.00	
			U					R	-	3 & 4	B26U100R	\$2940.00	
			V					S	-		B26V100S	\$2940.00	
			U					T	-		B26U100T	\$2940.00	
			U					-	R	5 & 6	C26U100R	\$2940.00	
			V					-	S		C26V100S	\$2940.00	
			U					-	T		C26U100T	\$2940.00	
			U					U	U	7	D26U100U	\$4140.00	
V	V	V	D26V100V	\$4140.00									

GEAR ASSEMBLY & SHAFT ROTATION





HADBRO TRANSMISSION PRODUCTS

MISCELLANEOUS APPLICATIONS

MODEL:

GB-26

RATIO	INPUT R.P.M.	INPUT SHAFT	INPUT TYPE	POWER		OUTPUT TORQUE		SHAFTS			GEAR ASSY	CODE No	PRICE EX GST							
				H.P.	K.W.	Lb Ins	NM	X	Y	Z										
1:1.53	540	X	U	160	119	12210	1380	U	R	R	1 & 2	A26U153R	\$2940.00							
			V					S	S	A26V153S		\$2940.00								
			U					T	T	A26U153T		\$2940.00								
			U					3 & 4	-	-	B26U153R	\$2940.00								
			V										S	-	B26V153S	\$2940.00				
			U										T	-	B26U153T	\$2940.00				
			U										-	R	C26U153R	\$2940.00				
			V										-	S			C26V153S	\$2940.00		
			U										-	T			C26U153T	\$2940.00		
			1:1.88					540	X	U	140	104	8714	984	U	R	R	1 & 2	A26U188R	\$2940.00
										V					S	S	A26V188S		\$2940.00	
										U					T	T	A26U188T		\$2940.00	
U	3 & 4	-		-	B26U188R	\$2940.00														
V							S			-					B26V188S	\$2940.00				
U							T			-					B26U188T	\$2940.00				
U							-			R					C26U188R	\$2940.00				
V							-			S							C26V188S	\$2940.00		
U							-			T							C26U188T	\$2940.00		
1:0.65	540	X		U	130	97	23210			2622					U	R	R	1 & 2	A26U065R	\$2940.00
				V											S	S	A26V065S		\$2940.00	
				U											T	T	A26U065T		\$2940.00	
			U	3 & 4				-	-		B26U065R	\$2940.00								
			V										S	-	B26V065S	\$2940.00				
			U										T	-	B26U065T	\$2940.00				
			U										-	R	C26U065R	\$2940.00				
			V										-	S			C26V065S	\$2940.00		
			U										-	T			C26U065T	\$2940.00		
			1:0.53	540				X	U		110	82	24072	2720	U	R	R	1 & 2	A26U053R	\$2940.00
									V						S	S	A26V053S		\$2940.00	
									U						T	T	A26U053T		\$2940.00	
U	3 & 4	-			-	B26U053R	\$2940.00													
V									S	-					B26V053S	\$2940.00				
U									T	-					B26U053T	\$2940.00				
U									-	R					C26U053R	\$2940.00				
V									-	S							C26V053S	\$2940.00		
U									-	T							C26U053T	\$2940.00		

GEAR ASSEMBLY & SHAFT ROTATION

